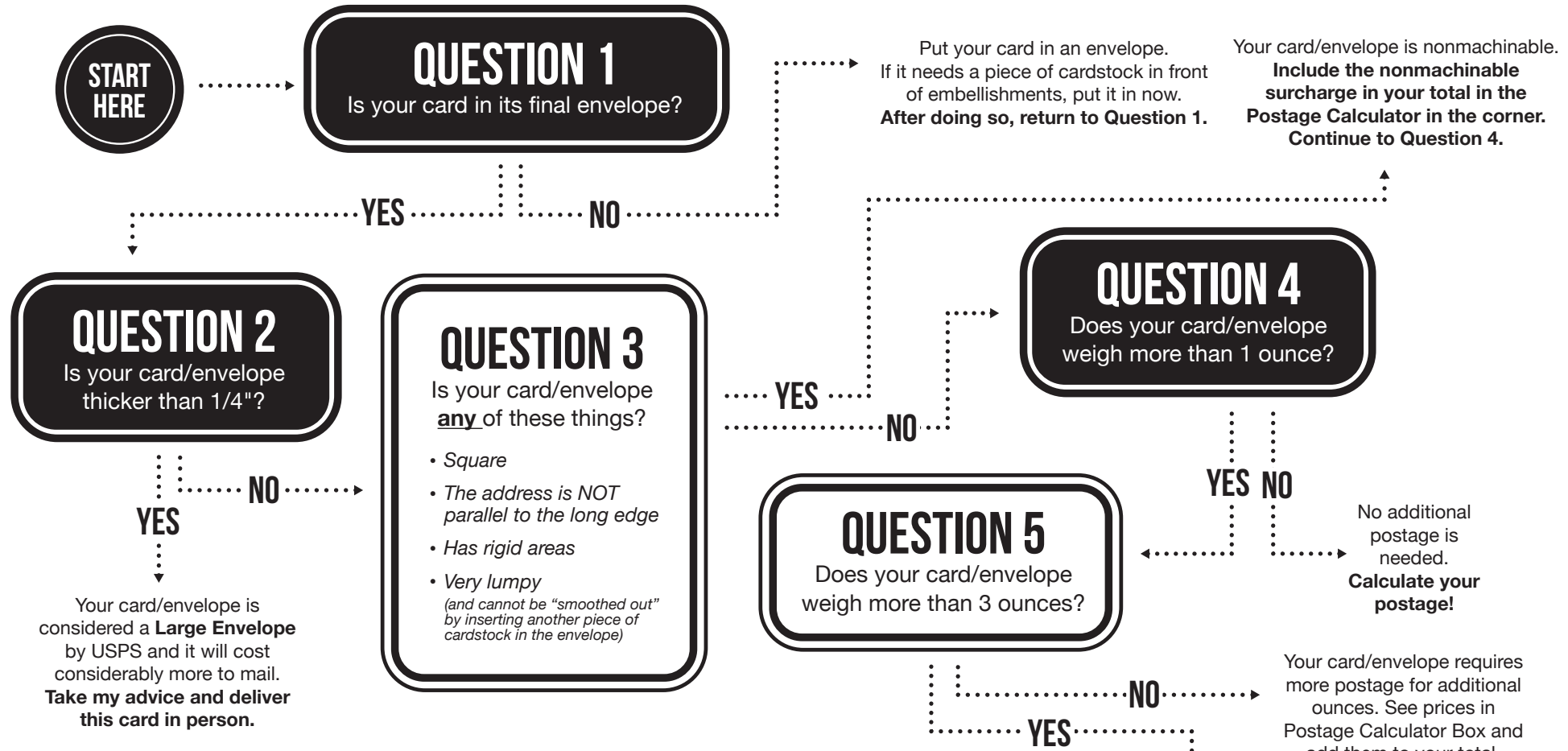


HOW MUCH DOES IT COST TO MAIL YOUR CARD?

by Kristina Werner of kwernerdesign.com



POSTAGE CALCULATOR

For all **First Class Letters** mailed from US addresses.

MAILING TO:	USA	Canada	Mexico	Groups 3-5	Groups 6-9
• Base Price (up to 1 oz.)	\$0.66	\$1.50	\$1.50	\$1.50	\$1.50
• Nonmachinable	\$0.40	\$0.40	\$0.40	\$0.40	\$0.40
• Weight charges:					
1-2 oz. total weight	\$0.24	\$0.00	\$0.77	\$1.30	\$1.10
2-3 oz. total weight	\$0.48	\$0.65	\$1.50	\$2.60	\$2.19
3-3.5 oz. total weight	\$0.72	\$1.25	\$2.26	\$3.90	\$3.28

POSTAGE TOTAL

Your card/envelope is considered a **Large Envelope** by USPS and it will cost considerably more to mail. **Take my advice and deliver this card in person.**

COUNTRY PRICE GROUPS

Afghanistan	6	Congo, Democratic Republic of the	7	Iceland	5	Mozambique	7	Somalia	n/a
Albania	4	Congo, Republic of the	7	India	6	Namibia	7	South Africa	7
Algeria	8	Costa Rica	9	Indonesia	6	Nauru	6	South Sudan, Republic of	7
Andorra	5	Cote d'Ivoire	7	Iran	8	Nepal	6	Spain	5
Angola	7	Croatia	4	Iraq	8	Netherlands	5	Sri Lanka	6
Anguilla	9	Cuba	9	Ireland	5	New Caledonia	6	Sudan	7
Antigua and Barbuda	9	Curacao	9	Israel	5	New Zealand	6	Suriname	9
Argentina	9	Cyprus	4	Italy	5	Nicaragua	9	Sweden	5
Armenia	4	Czech Republic	4	Jamaica	9	Niger	7	Switzerland	5
Aruba	9	Denmark	5	Japan	3	Nigeria	7	Syrian Arab Republic (Syria)	8
Ascension	7	Djibouti	7	Jordan	8	North Macedonia, Republic of	4	Taiwan	6
Australia	3	Dominica	9	Kazakhstan	6	Norway	5	Tajikistan	6
Austria	5	Dominican Republic	9	Kenya	7	Oman	8	Tanzania	7
Azerbaijan	4	Ecuador	9	Kiribati	6	Pakistan	6	Thailand	6
Bahamas	9	Egypt	8	Korea, Democratic Peoples Republic of (North Korea)	6	Panama	9	Timor-Leste, Democratic Republic of	6
Bahrain	8	El Salvador	9	Korea, Republic of (South Korea)	3	Papua New Guinea	6	Togo	7
Bangladesh	6	Equatorial Guinea	7	Kosovo, Republic of	5	Paraguay	9	Tonga	6
Barbados	9	Eritrea	7	Kuwait	8	Peru	9	Trinidad and Tobago	9
Belarus	4	Estonia	4	Kyrgyzstan	6	Philippines	6	Tristan da Cunha	7
Belgium	5	Eswatini	7	Laos	6	Pitcairn Island	6	Tunisia	8
Belize	9	Ethiopia	8	Latvia	4	Poland	4	Türkiye	4
Benin	7	Falkland Islands	9	Lebanon	8	Portugal	5	Turkmenistan	6
Bermuda	9	Faroe Islands	5	Lesotho	7	Qatar	8	Turks and Caicos Islands	9
Bhutan	6	Fiji	6	Libya	8	Reunion	9	Tuvalu	6
Bolivia	9	Finland	5	Liechtenstein	5	Romania	4	Uganda	7
Bonaire, Sint Eustatius, and Saba	9	France	5	Lithuania	4	Russia	4	Ukraine	4
Bosnia-Herzegovina	4	French Guiana	9	Luxembourg	5	Rwanda	7	United Arab Emirates	8
Botswana	7	French Polynesia	6	Madagascar	7	Saint (St.) Kitts and Nevis	9	United Kingdom of Great Britain and Northern Ireland	5
Brazil	9	Gabon	7	Malawi	7	Saint Helena	7	Uruguay	9
British Virgin Islands	9	Gambia	7	Malaysia	6	Saint Lucia	9	Uzbekistan	6
Brunei Darussalam	6	Georgia, Republic of	4	Maldives	6	Saint Pierre and Miquelon	4	Vanuatu	6
Bulgaria	4	Germany	5	Mali	7	Saint Vincent and the Grenadines	9	Vatican City	5
Burkina Faso	7	Ghana	7	Malta	5	Samoa	6	Venezuela	9
Burma	6	Gibraltar	5	Martinique	9	San Marino	5	Vietnam	6
Burundi	7	Greece	5	Mauritania	7	Sao Tome and Principe	7	Wallis and Futuna Islands	6
Cambodia	6	Greenland	5	Mauritius	7	Saudi Arabia	8	Yemen	8
Cameroon	7	Grenada	9	Mexico	2	Senegal	7	Zambia	7
Canada	1	Guadeloupe	9	Moldova	4	Serbia, Republic of	5	Zimbabwe	7
Cape Verde	7	Guatemala	9	Mongolia	6	Seychelles	7		
Cayman Islands	9	Guinea	7	Montenegro	5	Sierra Leone	7		
Central African Republic	7	Guinea-Bissau	7	Montserrat	9	Singapore	6		
Chad	7	Guyana	9	Morocco	8	Sint Maarten (Dutch)	9		
Chile	9	Haiti	9			Slovak Republic (Slovakia)	5		
China	3	Honduras	9			Slovenia	5		
Colombia	9	Hong Kong	3			Solomon Islands	6		
Comoros	7	Hungary	4						